



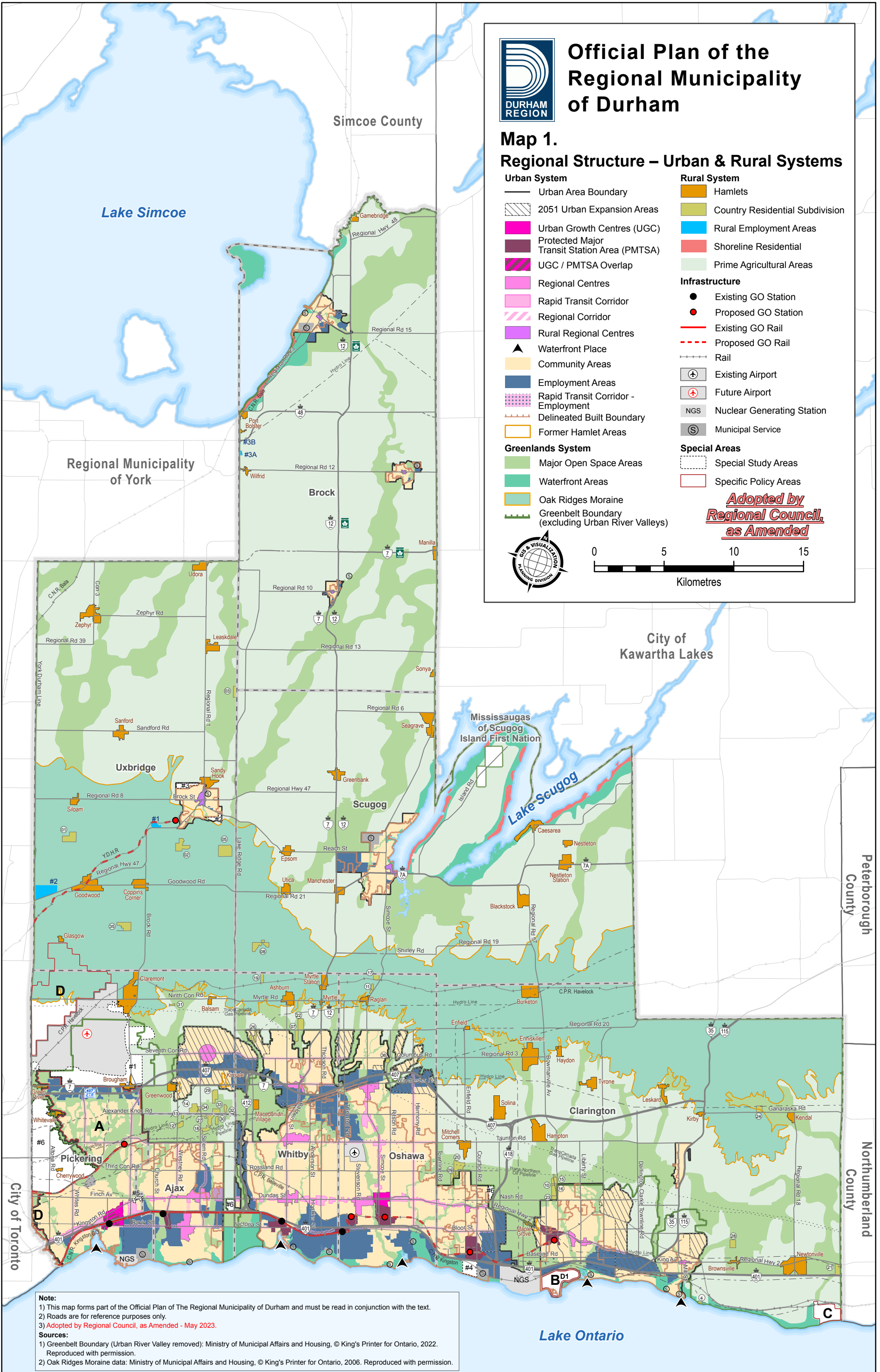
# Official Plan of the Regional Municipality of Durham

## Map 1.

### Regional Structure – Urban & Rural Systems

- |  |                                   |
|--|-----------------------------------|
| <b>Urban System</b>                                  | <b>Rural System</b>               |
| — Urban Area Boundary                                | ■ Hamlets                         |
| ▨ 2051 Urban Expansion Areas                         | ■ Country Residential Subdivision |
| ■ Urban Growth Centres (UGC)                         | ■ Rural Employment Areas          |
| ■ Protected Major Transit Station Area (PMTSA)       | ■ Shoreline Residential           |
| ■ UGC / PMTSA Overlap                                | ■ Prime Agricultural Areas        |
| ■ Regional Centres                                   | <b>Infrastructure</b>             |
| ■ Rapid Transit Corridor                             | ● Existing GO Station             |
| ■ Regional Corridor                                  | ● Proposed GO Station             |
| ■ Rural Regional Centres                             | — Existing GO Rail                |
| ▲ Waterfront Place                                   | - - - Proposed GO Rail            |
| ■ Community Areas                                    | — Rail                            |
| ■ Employment Areas                                   | ✈ Existing Airport                |
| ■ Rapid Transit Corridor - Employment                | ✈ Future Airport                  |
| ■ Delineated Built Boundary                          | ■ NGS Nuclear Generating Station  |
| ■ Former Hamlet Areas                                | ■ Municipal Service               |
| <b>Greenlands System</b>                             | <b>Special Areas</b>              |
| ■ Major Open Space Areas                             | ▭ Special Study Areas             |
| ■ Waterfront Areas                                   | ▭ Specific Policy Areas           |
| ■ Oak Ridges Moraine                                 |                                   |
| ■ Greenbelt Boundary (excluding Urban River Valleys) |                                   |

*Adopted by  
Regional Council,  
as Amended*



**Note:**  
 1) This map forms part of the Official Plan of The Regional Municipality of Durham and must be read in conjunction with the text.  
 2) Roads are for reference purposes only.  
 3) *Adopted by Regional Council, as Amended - May 2023.*

**Sources:**  
 1) Greenbelt Boundary (Urban River Valley removed): Ministry of Municipal Affairs and Housing, © King's Printer for Ontario, 2022. Reproduced with permission.  
 2) Oak Ridges Moraine data: Ministry of Municipal Affairs and Housing, © King's Printer for Ontario, 2006. Reproduced with permission.