



Official Plan of the Regional Municipality of Durham

Map 4. Aggregate Resources

◇ Aggregate Resource Extraction Area

Bedrock Resource Areas

■ Less than 1 metre of drift

■ 1 metre to 8 metre of drift

Sand and Gravel Resource Areas

■ Primary

■ Secondary

Greenbelt Plan

■ Oak Ridges Moraine Conservation Plan

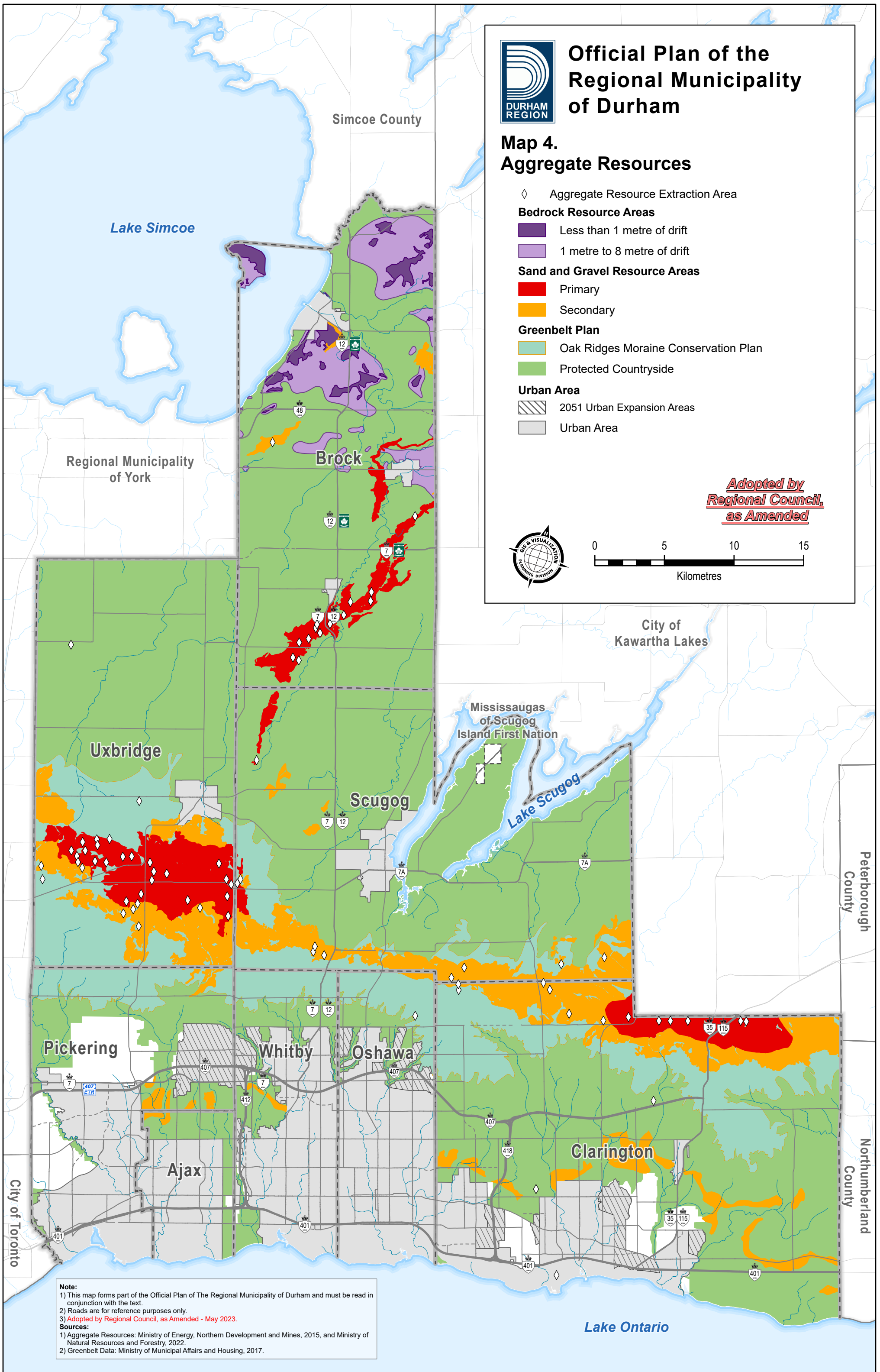
■ Protected Countryside

Urban Area

■ 2051 Urban Expansion Areas

■ Urban Area

*Adopted by
Regional Council,
as Amended*



Note:
 1) This map forms part of the Official Plan of The Regional Municipality of Durham and must be read in conjunction with the text.
 2) Roads are for reference purposes only.
 3) *Adopted by Regional Council, as Amended - May 2023.*

Sources:
 1) Aggregate Resources: Ministry of Energy, Northern Development and Mines, 2015, and Ministry of Natural Resources and Forestry, 2022.
 2) Greenbelt Data: Ministry of Municipal Affairs and Housing, 2017.