

Facts on Birth control use in Durham Region



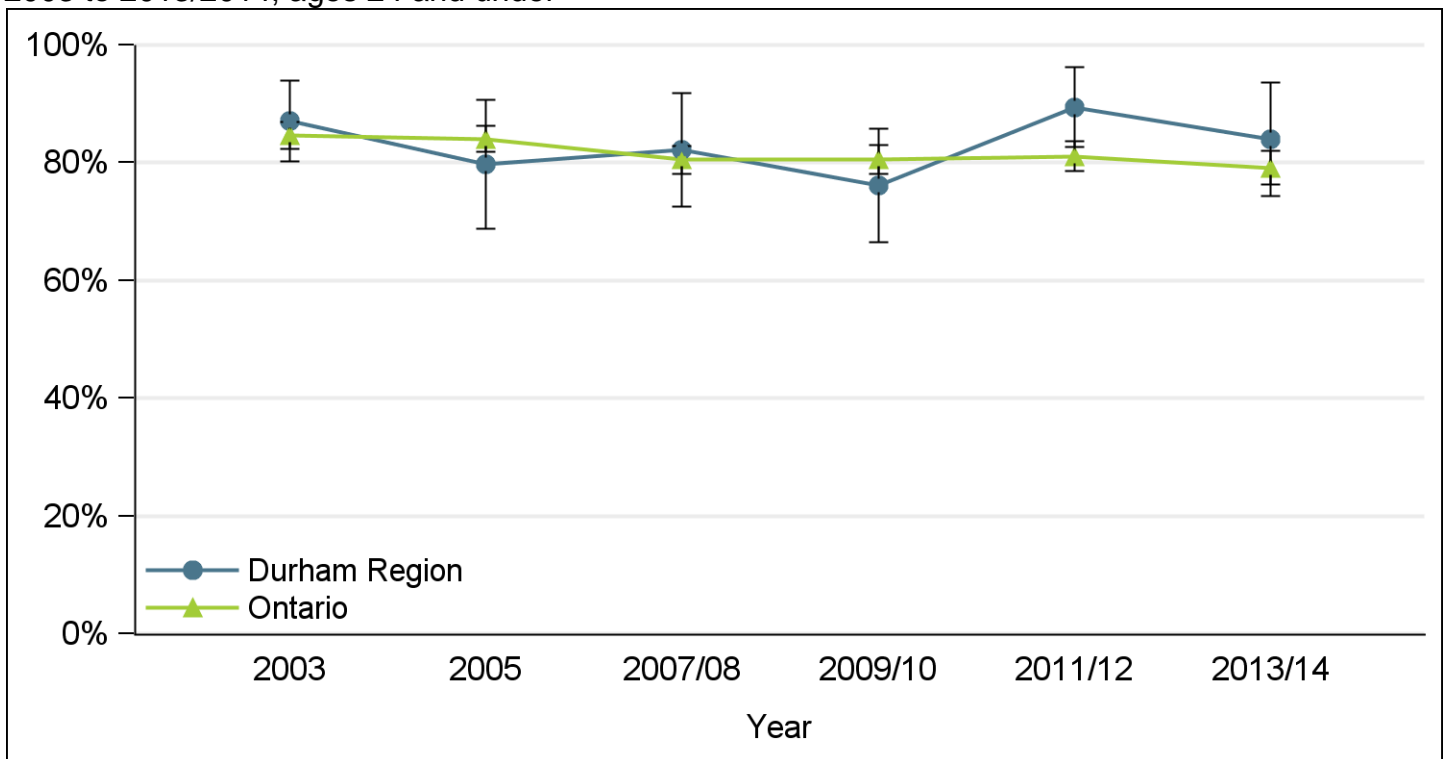
June 2017

Highlights

- In 2013/2014, 84 per cent of Durham Region residents 24 and under reported they usually used birth control with their partner in the past year. Rates for both Durham Region and Ontario remained the same since 2003.

Trend over time

Figure 1. Proportion who usually used birth control in the past year, Durham Region and Ontario, 2003 to 2013/2014, ages 24 and under



Place of residence	2003	2005	2007/08	2009/10	2011/12	2013/14
Durham	87%	80%	82%	76%	89%	84%
95 per cent CI (Durham)	80-94%	69-91%	72-92%	66-86%	83-96%	74-94%
Ontario	85%	84%	80%	81%	81%	79%
95 per cent CI (Ontario)	82-87%	82-86%	78-83%	78-83%	79-84%	76-82%

In 2013/2014, 84 per cent of Durham Region residents 24 and under reported they usually used birth control with their partner in the past year. This rate is similar to the rate observed for Ontario of 79 per cent. Figure 1 shows that rates for both Durham Region and Ontario remained the same since 2003.

Data Notes

Data Source: The **Canadian Community Health Survey (CCHS)** is a cross-sectional survey that collects information related to health status, health care utilization and health determinants for the Canadian population. It surveys a large sample of respondents and is designed to provide reliable estimates at the health region level. Since 2007, data are collected on an ongoing basis with annual releases, rather than every two years as was the case prior to 2007. The CCHS data are collected from persons aged 12 and over living in private dwellings, excluding individuals living on Indian Reserves and on Crown Lands, institutional residents, full-time members of the Canadian Forces, and residents of certain remote regions. Interviews are conducted using computer assisted interviewing, either in person or over the telephone.

Definitions and Survey Questions: Proportion of the population 24 years and under that reported they usually used birth control with their partner in the past year.

Data Analysis: The analysis used the CCHS share file obtained from the Ontario Ministry of Health and Long-Term Care. SAS version 9.4 was used to analyze the data. The final CCHS sampling weight formed the estimates. Error bars in the graphs represent the 95% confidence interval (CI) around the estimate. The true or actual estimate falls within the range of values 95 out of 100 times. All analyses excluded response options of “refusal”, “don't know”, “not stated” and “not applicable”, unless otherwise stated.